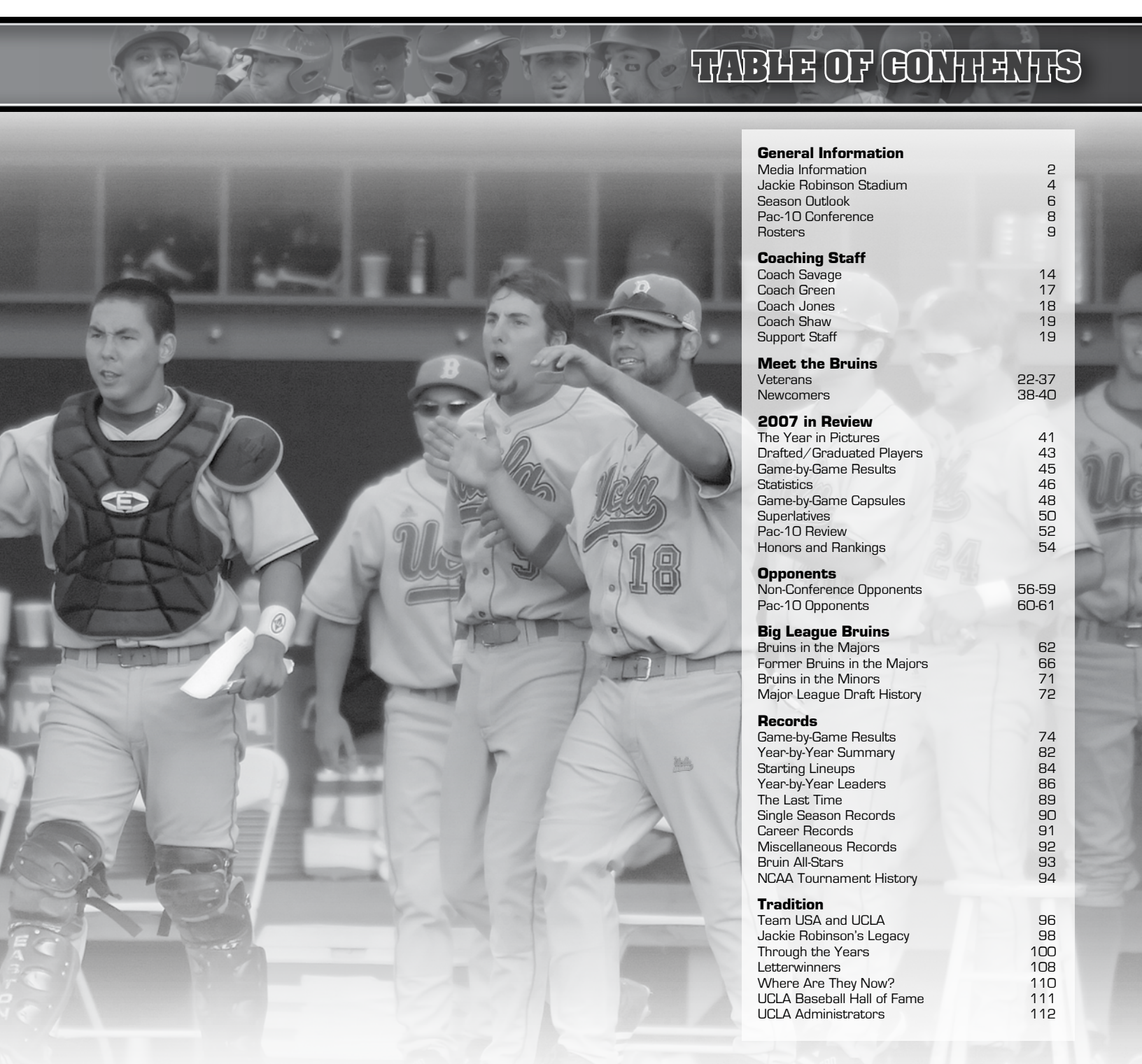


# TABLE OF CONTENTS



## General Information

Media Information	2
Jackie Robinson Stadium	4
Season Outlook	6
Pac-10 Conference	8
Rosters	9

## Coaching Staff

Coach Savage	14
Coach Green	17
Coach Jones	18
Coach Shaw	19
Support Staff	19

## Meet the Bruins

Veterans	22-37
Newcomers	38-40

## 2007 in Review

The Year in Pictures	41
Drafted/Graduated Players	43
Game-by-Game Results	45
Statistics	46
Game-by-Game Capsules	48
Superlatives	50
Pac-10 Review	52
Honors and Rankings	54

## Opponents

Non-Conference Opponents	56-59
Pac-10 Opponents	60-61

## Big League Bruins

Bruins in the Majors	62
Former Bruins in the Majors	66
Bruins in the Minors	71
Major League Draft History	72

## Records

Game-by-Game Results	74
Year-by-Year Summary	82
Starting Lineups	84
Year-by-Year Leaders	86
The Last Time	89
Single Season Records	90
Career Records	91
Miscellaneous Records	92
Bruin All-Stars	93
NCAA Tournament History	94

## Tradition

Team USA and UCLA	96
Jackie Robinson's Legacy	98
Through the Years	100
Letterwinners	108
Where Are They Now?	110
UCLA Baseball Hall of Fame	111
UCLA Administrators	112

**CREDITS:** The 2008 UCLA baseball media guide was written and designed by Alex Timiraos. Photography by ASUCLA Campus Studio (Don Liebig, Scott Quintard and Todd Cheney), Larry Goren, Icon Sports Media, Jeff Carnthers and Ryan Lafferty. Printing by Marina Graphics Center. Special thanks to Getty Images, ASUCLA Photography, Andrew Bernstein, the Los Angeles Visitors and Convention Bureau and Don Liebig for their photos in the UCLA Experience, and a special thanks to Dennis Hubbard for his photos from the College World Series. Photos in the Big League Bruins section courtesy of Major League Baseball, its respective teams and their photographers. Special thanks to Miles Kennedy, Jonathan Wiley, Brad Newton (Texas Rangers), Dan Mendlik (Cleveland Indians), Missy Mikulecky (San Francisco Giants), Denis Bancroft (Florida Marlins), Larry Babcock (Los Angeles Angels) and Mark Langill (Los Angeles Dodgers).

**PURCHASE:** Copies of the baseball media guide can be purchased in person at UCLA's Sports Information Office for \$8. By mail, make checks payable for \$10 to UC Regents and mail to UCLA Sports Information Office, Baseball Guide, P.O. Box 24044, Los Angeles, CA 90024. Please include your name and return address.

**MEDIA REQUESTS:** To request a credential for a UCLA baseball game or to schedule an interview with a player or coach, call Alex Timiraos at (310) 206-4008. Players and coaches are available for interviews before practice and after games. Please give 24 hours advance notice for all interviews. Visiting radio stations can activate a line in the radio booth, located on the first-base side of the stadium by notifying Alex Timiraos.

## Quick Facts

Location	J.D. Morgan Center, P.O. Box 24044 Los Angeles, CA 90024-0044	Baseball SID	Alex Timiraos
Athletics Switchboard	(310) 825-8699	SID E-mail	atimiraos@athletics.ucla.edu
Central Ticket Office	(310) 825-2101	SID Phone	(310) 206-4008
Chancellor	Gene Block	SID Fax	(310) 825-8664
Director of Athletics	Dan Guerrero	Director of Sports Information	Marc Dellins
Senior Women's Administrator	Petrina Long	Athletics Website	www.uclabruins.com
Faculty Athletic Representative	Donald Morrison	UCLA FanFone	(310) 825-8575
Event Management	Dave Martinez	2007 Overall Record	33-28
Home Field (capacity)	Jackie Robinson Stadium (1,250)	2007 Conference Record	14-10 (3rd)
Press Box Phone	(310) 794-8213	Lettermen Returning/ Lost	22/9
Enrollment	36,890	Conference Championships	6
Founded	1919	NCAA Tournament Appearances	14
Colors	Blue and Gold	College World Series	2 (1969, 1997)
Nickname	Bruins		
Conference	Pacific-10		
National Affiliation	NCAA Division I		
Head Coach (Alma Mater)	John Savage (Nevada '91)		
Record at UCLA (Years)	81-94 (three years)		
Career Record	169-178-1 (six years)		
Assistant Coaches	Brian Green (4th year) Matt Jones (4th year) P.C. Shaw (2nd year)		



# MEDIA INFORMATION

## BRUINS IN THE SPOTLIGHT

Having reached the NCAA Tournament each of the last two seasons, the UCLA baseball program has received increased attention among the local media and national college baseball scene. Los Angeles has seven local network affiliates or independent television stations. Fox Sports Net, which features the Bruins in its weekly Lexus Gauntlet show, televises several UCLA baseball games each spring.

## THE BEST ARE OUT WEST

The southern California area boasts among the most competitive collegiate baseball environments in the country. Crosstown Pac-10 rivals UCLA and USC square off on Fox Sports Net each spring. Locally, the Bruins also face prominent programs such as Cal State Fullerton, Pepperdine, UC Irvine, San Diego, San Diego State and UC Riverside.



**Good thing Bruin**  
Miller's Curtis leads UCLA on title hunt



## UCLA's Primary Media Outlets

### Newspapers

**Los Angeles Times**  
202 West First St.  
Los Angeles, CA 90053  
(P): 213-237-7145  
(F): 213-237-7876  
sports.latimes.com

### Orange County Register

625 N. Grand Ave.  
Santa Ana, CA 92711  
(P): 714-796-7817  
(F): 714-565-6765  
ocregister.com

### Los Angeles Daily News

P.O. Box 4200  
Woodland Hills, CA 91365  
(P): 818-713-3600  
(F): 818-713-3436  
dailynews.com

### Riverside Press Enterprise

3512 14th St.  
Riverside, CA 92502  
(P): 909-368-9533  
(F): 909-368-9029  
pe.com

### South Bay Daily Breeze

5215 Torrance Blvd.  
Torrance, CA 90509  
(P): 310-540-4201  
(F): 310-540-3067  
www.dailybreeze.com

### Long Beach Press Telegram

604 Pine Ave.  
Long Beach, CA 90844  
(P): 562-499-1338  
(F): 562-437-8914  
presstelegram.com

### Pasadena Star News San Gabriel Valley Tribune

1210 N. Azusa Canyon Rd.  
West Covina, CA 91790  
(P): 626-962-8811  
(F): 626-856-2758  
pasadenastarnews.com  
sgvtribune.com

### UCLA Daily Bruin

308 Westwood Plaza  
Los Angeles, CA 90024  
(P): 310-825-2095  
(F): 310-206-0906  
dailybruin.ucla.edu

### National Newspapers

**Associated Press**  
221 So. Figueroa, S 300  
Los Angeles, CA 90012  
(P): 213-626-1200  
(F): 213-346-0200  
ap.org

### USA Today

10877 Wilshire #406  
Los Angeles, CA 90024  
(P): 310-443-8900  
(F): 310-443-8923  
usatoday.com

### Baseball Outlets

**Baseball America**  
600 S. Duke Street, Box 2089  
Durham, NC 27702  
(P): 919-682-9635  
(F): 919-682-2880  
baseballamerica.com

### Collegiate Baseball

P.O. Box 50566  
Tucson, AZ 95703  
(P): 520-623-4530  
(F): 520-624-5501  
collegiatebaseball.com

### Baseball Weekly

1000 Wilson Blvd. 21st Fl.  
Arlington, VA 22229  
(P): 800-872-3410 ext. 4495  
(F): 703-558-4677  
baseballweekly.com

### College Baseball Insider

P.O. Box 8235  
Richmond, VA 23226  
collegebaseballinsider.com

### Television Stations

**KCBS (Ch. 2)/KCAL (Ch. 9)**  
4200 Radford Ave.  
Studio City, CA 91604  
(P): 818-655-2400

### NBC4 (Ch. 4)

3000 W. Alameda Ave.  
Burbank, CA 91523  
(P): 818-840-4237  
(F): 818-840-3076

### KTLA (Ch. 5)

5800 Sunset Blvd.  
Hollywood, CA 90028  
(P): 323-460-5907  
(F): 323-460-5333

### KABC (Ch. 7)

500 Circle Seven Dr.  
Glendale, CA 91201  
(P): 818-863-7677  
(F): 818-863-7889

### KTTV (Ch. 11)/KTTV (Ch. 13)

1999 S. Bundy Dr.  
Los Angeles, CA 90025  
(P): 310-584-2030  
(F): 310-584-2450

### Fox Sports Net West

111 S. Figueroa Ste. 108  
Los Angeles, CA 90015  
(P): 213-143-7800  
(F): 213-763-4633

### ESPN

ESPN Plaza  
Bristol, CT 06010  
(P): 860-766-2000

### College Sports Television

Chelsea Piers, Pier 62  
New York, NY 10011  
(P): 212-342-8760

### Radio Stations

**KLAC Sports 570**  
3400 W. Olive Ave. #550  
Burbank, CA 91505  
(P): 818-559-2252  
(F): 818-566-6114 or  
818-566-6105

### KSPN 710 (ESPN Radio)

3321 S. La Cienega  
Los Angeles, CA 90016  
(P): 818-840-2492  
(F): 310-558-5648

### uclaradio.com

308 Westwood Plaza  
Los Angeles, CA 90024  
(P): 310-825-9104

# Brooks keeps Bruins in the winner's bracket

SEARCH  CD ESPN PARTNER  
THE HOME FOR BASEBALL INSIDERS  
PROSPECTS | DRAFT | COLLEGE | HIGH SCHOOL

## Clash of the Titans



**XBats**  
The Players Choice  
www.xbats.com

PLAYER FINDER  
Enter as much of the player's last name as you know  
 FIND PLAYER >

TOP STORIES  
The Field Of 64  
See the regional pairings and national seedings  
Schedule Strength Was The Key  
Committee...



# Murphy moves UCLA forward

**TIM MURPHY**  
UCLA

## rivals.com COLLEGE BASEBALL

Home Latest News National Clubhouse Top 25 Rankings Scores Power Rankings

## Blasting Bruins



- LATEST NEWS
- Garrett tosses gem in Tulane
  - Machtolf, Gonzaga release
  - Coastal Carolina releases
  - Kentucky Black team takes
  - Vanderbilt Gold takes seri
  - Alabama releases 2008 s
  - The Rivals 25: Pre-Fall r

MESSAGE BOARDS  
College Baseball C  
Your home for College B

# Bruins march on to NCAA Super Regionals

AM **570KLAC** SPORTS **ESPN**



**UCLA BASEBALL RADIO NETWORK**  
Danny Lee (left) and Tim Wilhelm call the action at all UCLA home games and select road games. Listen to the live broadcast at [uclabruins.com](http://uclabruins.com). Lee returns for his fourth season on air at Jackie Robinson Stadium, his second year working with Wilhelm.



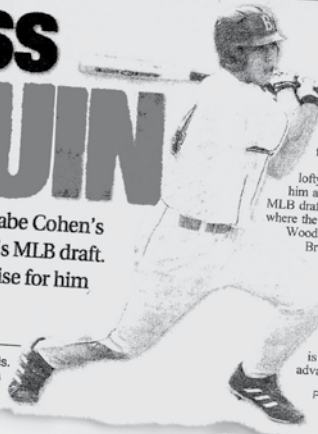
**SPORTS INFORMATION**  
Alex Timiraos enters his second season as the UCLA baseball sports information director. All media and credential requests are handled through Timiraos and the UCLA sports information office.

Phone: (310) 206-4008  
Fax: (310) 825-8664  
E-mail: [atimiraos@athletics.ucla.edu](mailto:atimiraos@athletics.ucla.edu)



# Happiness is BRUIN

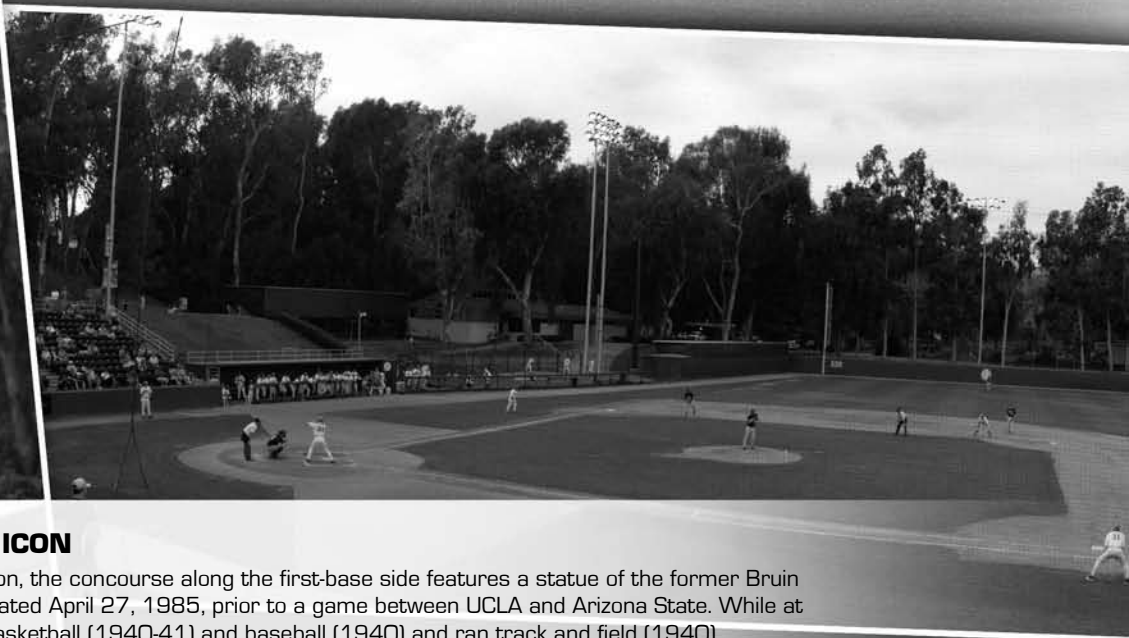
A sub-par senior year at ECR dashed Gabe Cohen's dreams of being taken early in last year's MLB draft. It turned out to be a blessing in disguise for him — and especially UCLA



BY HEATHER GRIPP  
Staff Writer  
The UCLA baseball team is glad Gabe Cohen didn't have a season like this last year. If he had, Cohen might not have ended up playing for the Bruins.  
After failing to live up to lofty expectations that had made him a candidate for last year's MLB draft, Cohen enrolled at UCLA, where the El Camino Real High of Woodland Hills graduate is the Bruins' leading hitter and the Pacific-10 Conference Co-Newcomer of the Year. Cohen is hitting .357 with 10 home runs and 33 RBIs.  
The freshman outfielder's next challenge is to try to help UCLA advance past the NCAA

UCLA's Gabe Cohen is hitting .357 with 10 HRs and 33 RBIs. Photos courtesy of UCLA

# JACKIE ROBINSON STADIUM



## JACKIE ROBINSON – AMERICAN ICON

Named after American legend Jackie Robinson, the concourse along the first-base side features a statue of the former Bruin four-sport letterwinner. The statue was dedicated April 27, 1985, prior to a game between UCLA and Arizona State. While at UCLA, Robinson played football (1939-40), basketball (1940-41) and baseball (1940) and ran track and field (1940).

Jackie Robinson Stadium opens its 28th season as UCLA's home baseball field this spring after having undergone significant renovations over the last two years. Most recently, the facility welcomed a state-of-the-art, major-league playing surface in January 2008. The natural grass sod will allow Jackie Robinson Stadium to field one of the cleanest and best surfaces in college baseball.

Prior to the 2007 season, the UCLA baseball program installed a major-league quality net behind home plate, improving sightlines for fans and television crews. Other major improvements have included the addition of over 1,000 chairback seats with cupholders in February 2006. The stadium welcomed a new hitter's eye, draped above the center field wall, and the Bruins scoreboard received a well-deserved face lift.

Located on the site of old Sawtelle Field, Jackie Robinson Stadium provides one of the most comfortable college baseball settings in the West. The stadium was made possible by a private gift from Hoyt Pardee (UCLA '41), a classmate of Jackie Robinson. Without Hoyt, the stadium would not be a reality.

Twenty years prior, at the end of the 1984 season, the second major phase of the stadium's

original construction was completed. A new clubhouse, press box, snack bar, and restrooms were added. The clubhouse is located among the trees behind the third base dugout (pictured above). The clubhouse also contains training and equipment rooms, a meeting room, and offices. The UCLA Baseball Hall of Fame includes plaques of all members. The trophy case houses photos of UCLA alumni currently in the pros as well as the 1969, 1976, 1979, 1986 and 2000 Pac-10 championship trophies.

The main press box, located behind home plate, is flanked by two radio/television booths and provides space for media covering the Bruins. Excellent camera positions for television coverage are located atop both dugouts and on the concourse level. Controls for the professional public address system, electronic scoreboard and lighting systems are located in the main press box. The snack stand is located above the first base stands along with public restrooms and a pay phone.

Jackie Robinson Stadium - UCLA baseball's sixth home field - can be accessed via the San Diego Freeway (405) and Wilshire Blvd. The stadium is located on Constitution Avenue (west off Sepulveda Blvd.) and is just minutes away from the UCLA campus.

The stadium was dedicated on Feb. 7, 1981 with an exhibition game between the Bruins and the Los Angeles Dodgers that drew 2,500 fans. The facility also hosted the 1986 West Coast Conference playoff game between Pepperdine and Loyola Marymount (attendance of 1,800). One week later, the stadium hosted the 1986 NCAA West Regional Tournament. Loyola Marymount, UC Santa Barbara, Hawaii, and UCLA participated in the tournament, won by Loyola Marymount. It marked the first time an NCAA Regional had been hosted in Los Angeles since USC's Dedeaux Field hosted the 1978 District 8 Playoffs. The 1986 title game between Loyola Marymount and Hawaii drew a crowd of 1,815.

Jackie Robinson, for whom the stadium is named, was the first African-American baseball player to compete in the major leagues when he joined the Brooklyn Dodgers in 1947. As a student-athlete at UCLA, Robinson became the Bruins' first four-sport letterman, playing football, basketball, track, and baseball. A bronze statue of Robinson is located near the concession stand on the concourse level. The statue was dedicated on April 27, 1985, before the UCLA-Arizona State game.



## OFFSEASON RENOVATION

Jackie Robinson Stadium received a long-awaited face lift in the winter, as a major-league field surface was installed in January. Construction personnel bulldozed the stadium's field the morning of Tuesday, Nov. 20, paving the way for a new sprinkler and irrigation system.

Workers laid down natural grass sod in mid-January, allowing the renovated field to be game-ready by February. The field renovation marks the third major project administered to Jackie Robinson Stadium since February 2006. The facility has also received over 1,000 chairback seats with cupholders, in addition to a state-of-the-art netting behind home plate.



## UCLA Baseball Returns Veteran Nucleus for 2008 Campaign

*Experienced position players, talented young pitchers look to give Bruins an edge in competitive Pac-10*

After enjoying another successful season in 2007, highlighted by UCLA's first NCAA Super Regional appearance since 2000, the Bruins return a loaded, experienced corps of position players and a young, talented pitching rotation in 2008.

Anchored by juniors **Ryan Babineau**, **Brandon Crawford**, **Jermaine Curtis**, **Cody Decker** and **Tim Murphy** – five key veterans from head coach John Savage's first recruiting class at UCLA (ranked No. 5 by Baseball America) – the Bruins have their sights set on taking another step forward. As freshmen, that group made an immediate impact on the baseball program as UCLA finished its 2006 season with 33-25 record and a trip to the Malibu Regional.

Last season, Savage's second recruiting class (ranked No. 13 by Baseball America) added depth to a rising program, as UCLA posted a 33-28 record and concluded its season in the Super Regionals at Cal State Fullerton. Key contributions from **Gavin Brooks**, **Alden Carrithers**, **Garett Claypool** and **Justin Uribe** in their first season aided the Bruins' ascent to a top-25 finish.

In 2008, the Bruins have welcomed a group of 12 newcomers (ranked No. 7 by Baseball America) to help UCLA advance to the College World Series for the first time since 1997. In all, UCLA returns 22 letterwinners. A veteran group of infielders, strong outfield depth, a two-year starting catcher and a talented pitching staff should establish UCLA as one of the nation's most competitive teams.

"We're very excited that we have this nucleus of players that began at UCLA in 2006," Savage said. "They are an experienced group of position players that we feel is prepared to make this season a special one."

### PITCHING

**Letterwinners Returning/Lost: 9/4**  
**Starters Returning/Lost: 2/1**

The Bruins' 2007 starting rotation was a work in progress that began to thrive midway through the spring, as UCLA entered Pac-10 play. Tyson Brummett shined as the staff ace in his senior season, and Brooks emerged as a consistent arm in each of the team's series finales. However, the development and determination of Murphy helped cement the pitching staff and guide the Bruins toward their playoff run.

Left-handers Brooks and Murphy return in 2008 after having established themselves under the brightest lights in 2007. In each of their first seasons as collegiate pitchers, the former Rancho Buena Vista High School standouts improved as the year continued. Brooks, a 6-foot-3 sophomore, ended his freshman campaign having hurled three consecutive complete games – one against national champion Oregon State, one against Illinois-Chicago in the Long Beach Regional and another in a 2-1 loss to Cal State Fullerton in the Super Regionals.

"Last season, we put Gavin into that Sunday role from day one and he never missed a beat – he never missed a start," said Savage, who serves as the team's pitching coach. "He evolved into one of the toughest pitchers in the country. Down the stretch in his final four starts, I don't think there was any better freshman in the country."

A coveted two-way player at Rancho Buena Vista, Murphy emerged as a solid left-handed pitcher as a sophomore in 2007. Having exclusively played the outfield in 2006, Murphy cemented his place in the starting rotation in UCLA's conference-opening series at Stanford, where he registered seven strikeouts and allowed just four hits in 5.2 scoreless innings to pick up the victory.

### CAREER GAMES PLAYED

Player	Games	Starts	Pitcher	Games	Starts
Crawford	119	119	Novak	47	4
Babineau	117	115	Lafferty	40	3
Curtis	87	81	Claypool	24	7
Decker	84	62	Murphy	19	12
Carrithers	61	61	Brooks	18	18
Cohen	56	51	Drummond	8	2
Dolan	55	22	Brewer	4	0
Murphy	53	43	Haver	3	0
Murray	47	19	Uribe	3	0
Uribe	46	35			
Dunlap	41	26			
Weisser	40	24			
Haerther	37	29			
Quist	10	0			
Dean	6	2			



Down the road, the hard-throwing left-hander recorded crucial Pac-10 wins against Washington, Arizona and California. At the Long Beach Regional, Murphy registered a save in the series-opener versus Pepperdine, before hurling a complete-game victory in the Regional Final against Long Beach State.

"Tim had as much of an impact on our season turn-around as anybody did," Savage said. "He's the biggest competitor on our team. He really established himself last spring as a reliable Pac-10 starter and became a guy we could really count on."

Murphy's performance in 2007 proved essential to the Bruins, particularly after UCLA's starting rotation took a hit before the season began. Slated to be the team's No. 2 starter as a freshman, **Charles Brewer** missed the season's first three months with illness and injury before joining the bullpen in early May. After a successful summer pitching for the Cape Cod League's Chatham A's, Brewer returns to Westwood this spring, healthy and eager to contribute.

"When Charles is healthy, he's a very talented right-handed pitcher," Savage said. "He has terrific command of his fastball and can pitch very well to both sides of the plate. He's your prototypical college right-hander. We expect him to be healthy and to be out there competing from day one. That will really offset our two left-handers in Tim Murphy and Gavin Brooks."

Among the Bruins' most encouraging performances in 2007 came from right-hander **Garett Claypool**, who logged 53.1 innings in 24 appearances, including seven mid-week starts. Claypool moved into the closer role late in the season and finished his freshman campaign with four saves and a 3.54 ERA while limiting opponents to a .230 average.

Juniors **Jason Novak** and **Brendan Lafferty**, two of the team's most veteran arms, will add depth to UCLA's bullpen. Novak, who leads all Bruins with 47 pitching appearances in two seasons, registered a 4.83 ERA in 41.0 innings as a sophomore in 2007. The Agoura High School (Agoura, Calif.) product features one of the best sliders among all Pac-10 pitchers and showcases a fastball in the low 90s.

Lafferty made a team-high 25 appearances, including two starts, and surrendered just eight walks in 28.1 innings in 2007. The 6-foot-4 left-hander from Riverside, Calif., redshirted in 2006 after making 15 appearances as a freshman in 2006. Lafferty may see action as both a starter and a reliever this season. Other starting pitching candidates include sophomore **Matt Drummond**, who made two starts in 2007, and freshmen **Dan Klein** and **Rob Rasmussen**.

"In each of our first two weeks, we will play five games," Savage said. "We have a lot of options, where some of those guys may pitch in the starting rotation or filter into the bullpen. We're still young on the mound, but we're very talented."

### CATCHING

**Letterwinners Returning/Lost: 2/1**  
**Starters Returning/Lost: 1/0**

No catcher in the Pac-10 Conference has played in as many games or caught as many innings as Babineau, a freshman All-America selection by Baseball America in 2006 and an All-Pac-10 honorable mention in 2007. In 117 games over the past two seasons (115 starts), Babineau has committed just two errors behind the plate while totaling a .266 batting average with 11 home runs, 62 RBI and 58 runs.

Having served as the Bruins' primary catcher since he stepped on campus in the fall of 2005, Babineau has fortified his status as a team captain in 2008.

"Ryan has been the heart and soul of our program since day one," Savage said. "He's a very good receiver with a major-league arm, and he has been our quarterback behind the plate. He handled a very good staff in 2006, and he carried that over to last season, when he really helped elevate Tyson's game."

Babineau's work behind the plate helped the development of young pitchers Brooks and Murphy in 2007, and Savage knows that UCLA's freshmen pitchers will have the same luxury in 2008. Offensively, Babineau became a spark at the bottom of the Bruins' batting lineup last spring. The former standout athlete at Etiwanda High School (Rancho Cucamonga, Calif.) earned All-NCAA Regional Team accolades after hitting 5-for-8 with two RBI and four sacrifice bunts in three regional games at Long Beach State.

"Ryan knows me very well, and we've worked hard together in terms of scouting reports and getting to know our pitchers," Savage said. "He just has a great feel for each of our pitchers. That's what makes him a special player as well as a special person."

Senior **Brent Dean** returns in 2008 after having played in six games last spring (two starts). Dean posted a .250 average in limited action after transferring to UCLA from L.A. Harbor Junior College.

The Bruins welcome junior **Gino Aielli** and freshman **Chris Giovinazzo** behind the plate in 2008. Aielli spent the last two years playing for Saddleback Junior College (Mission Viejo, Calif.), and Giovinazzo arrives in Westwood from Laguna Hills High School (Laguna Hills, Calif.).

### INFIELD

**Letterwinners Returning/Lost: 6/3**  
**Starters Returning/Lost: 4/0**

On a team full of experienced position players, the 2008 edition of UCLA's infield may be the ballclub's most veteran unit. Anchored on the left side of the infield by Curtis at third base and led up the middle by Crawford at shortstop and second baseman **Alden Carrithers**, Bruin fans will be treated to more than just a handful of "web gems" throughout the season. Decker and sophomore **Casey Haerther** will carry the bulk of responsibility at first base, as sophomore **Justin Uribe** may see time at the corner infield.

In 2007, Curtis proved to be the spark that the Bruins so vitally needed. UCLA opened its season with an 8-14 mark and stood at 10-14 before Curtis returned to the lineup (ineligibility) for the Pac-10 season opener at Stanford. Not only did UCLA sweep the Cardinal on the road for the first time since 1991, but the Bruins rolled to their best conference start (at 8-1) since 1924.

"We were in a funk for the first 22 games, and the day he stepped on the field for the series opener at Stanford, our whole mindset changed," Savage said. "From the way we pitched to the way we played defense to the way we battled at the plate, you name it – I've never seen one player make that much of a difference."

After leading all regulars with a .336 average as a freshman in 2006, Curtis picked up where he left off in 2007. The Fontana, Calif., resident posted a .329 average, totaling four home runs, 33 RBI, 31 runs and a .412 on-base percentage in 37 games. Curtis earned All-NCAA Regional Team honors

at the Long Beach Regional, finishing the three-game series hitting .500 (7-for-14) with three RBI, one double and a key home run in the regional final.

"He's a guy that brings tremendous energy to the field, in the weight room, when we're conditioning, to practice, and certainly to the game," Savage said. "He is the same all the time. And that's what makes him a throwback player, in terms of having so much passion for the game of baseball. He creates an unbelievably positive, fun atmosphere."

And the atmosphere at Jackie Robinson Stadium should be just as positive in 2008 with the return of Crawford, who was named the team's most valuable player in 2006 and 2007. A five-tool player who prides his defensive game, Crawford registered a .335 average with seven home runs, 55 RBI and 50 runs in 2007.

"He loves to play defense, and that's always a nice characteristic to have out of a young player," Savage said. "He's always taken huge pride in his ability to go get ground balls and to throw people out. He is an athletic guy who has unbelievable range and a major-league arm. A left-handed threat at the plate, he has put up good numbers for us. As our MVP the past two seasons, he's a very talented player who has really grown from this experience."

Carrithers sparked the Bruins at the top of the lineup throughout the 2007 season, leading UCLA in multiple offensive categories – batting average (.352), runs scored (53), walks (32) and hit-by-pitch (tied, 11). Hitting in either the leadoff or second slots in the batting lineup, Carrithers proved himself as a key contributor at UCLA after having spent his first two seasons playing for UC Santa Barbara.

"Alden has a great knack of the strike zone, of taking walks – he's tough to strike out," Savage said. "When he uses the whole field, he is as good a hitter as there is in the Pac-10. He's a very offensive player and has been a hit machine since he stepped in to Division I baseball. Defensively, Alden worked very hard in the fall and has really improved that part of his game. You are going to see a much better defensive player this spring."

With the departure of Tim Stewart (graduation), Decker and Haerther will compete for playing time at first base. Both players split time in 2007 between first base and designated hitter, as Decker saw action at first base in 26 contests. The former standout at Santa Monica High School (Santa Monica, Calif.) led the Bruins with 14 home runs and 57 RBI one year ago. Likewise, the slugger posted team-highs of 10 home runs and 36 RBI in Pac-10 play.

"Cody has that rare combination of a guy who can hit for power and a high average," Savage said. "He's a good all-around hitter and a tough out. Whenever you see a guy hit 14 home runs and knock in just under 60 RBI with that high of an average, you've got to love a guy like that. He can hit the three-run homer, and he'll have the tough at-bat. He has really turned himself into a complete hitter."

Haerther saw action in 37 games last spring (29 starts), making the bulk of his appearances as the Bruins' designated hitter. A product of Chaminade High School (West Hills, Calif.), Haerther posted a .263 average with one home run, 15 RBI and 12 runs. Savage and the Bruins look forward to Haerther's progress in 2008 and hope that his sophomore season mirrors that of Decker's in 2007.

"Casey is one of those sophomores who has a great future," Savage said. "We know he can hit, but he had a pretty typical freshman season where he struggled at times. But he can come out this spring and be the offensive threat that Cody [Decker] has become, because he certainly has that type of ability."

## OUTFIELD

**Letterwinners Returning/Lost: 8/1**  
**Starters Returning/Lost: 2/1**

UCLA possesses tremendous depth and talent in the outfield, as several Bruins look to pick up where they left off in 2007. The outfield unit lost Will Penniell (graduation), but returns four players who saw ample playing time in 2007 – seniors **Brady Dolan** and **Mickey Weisser** and sophomores **Gabe Cohen** and **Justin Uribe**. UCLA also welcomes back sophomore **Blair Dunlap**, who hit .300 as a freshman in 2006 before missing the 2007 campaign with a shoulder injury (medical redshirt).

Cohen had a sensational freshman year and looks to increase his production in 2008. UCLA's right fielder, Cohen played in 56 games (51 starts, all in right field) and posted a .345 batting average, the second-highest mark on the team. Prior to earning Pac-10 Co-Newcomer of the Year honors, he belted 10 home runs and totaled 36 RBI, the highest totals by a UCLA freshman since Wes Whisler accomplished the feat in 2002. A good defensive outfielder with a strong arm, the Bruins are excited about Cohen's potential this spring.

"We feel really good about our outfield, starting with Gabe Cohen in right," Savage said. "He's your prototypical Pac-10 right fielder. He has tremendous power and he's another guy who can hit for a high average. Gabe has improved his defense, and he's got a good arm."

Uribe played all three outfield positions as a freshman and appeared in three games as a relief pitcher – primarily, he manned the real estate in center field (35 starts, 21 in center field). The former Foothill High School standout (Santa Ana, Calif.) blossomed toward the end of the 2007 season, earning All-NCAA Regional Team honors after hitting .545 (6-for-11) in three Long Beach Regional games. In all five postseason contests, Uribe logged a team-high .526 average (10-for-19). This season, Savage expects to see Uribe contributing in the outfield, at first base and on the mound.

"Justin played unbelievable center field for us down the stretch," Savage said. "He's got a great feel for how the game should be played. Last season, he surprised not only the Pac-10, but all of college baseball with how well he played as a freshman. He's a fun player to coach, because he is a gamer. He can play a lot of different positions, and he's always going to do what it takes for the team to win."

Dolan hit .280 in 39 games (21 starts), collecting one home run, 16 runs and seven RBI. A fifth-year senior who transferred to UCLA prior to the 2006 season, Dolan made 17 starts in center field and four in left field. Weisser, who competed for Sierra Junior College in 2005 (with Dolan) and 2006, posted a .253 average and .417 on-base percentage, drawing 18 walks and nine hit-by-pitches. Both senior outfielders pride themselves on playing with a tough, scrappy and selfless attitude.

"Brady has gotten bigger and stronger, and we really look for him to be in the lineup a lot," Savage said. "He had a tremendous fall, and we're excited to see him play this spring. Mickey is a guy who has a tremendous feel for the strike zone. He's a tough out and gets on base often. Being a senior, he's been through it before, and we look for him to certainly be a contributor in our outfield."

Savage and the Bruins have eagerly anticipated the return of Dunlap, a speedy center fielder who earned All-NCAA Regional Tournament honors at the Malibu Regional in 2006. Dunlap played in just six games in 2007 before earning a medical redshirt due to a nagging right shoulder injury. A product of Santa Margarita High School (Rancho Santa Margarita, Calif.), Dunlap hit .300 in 35 games his freshman season.

"In center field, we feel strong about Blair's recovery," Savage said. "He had a tremendous fall, and he's another very offensive player who can track down the ball well in center. He profiles to be a legitimate Pac-10 center fielder in 2008."

UCLA welcomes freshman **Brett Krill**, a 2007 AFLAC All-American, to the outfield this season. Krill, a standout ballplayer at Aliso Niguel High School (Aliso Viejo, Calif.), should also compete for playing time. Aside from pitching in the rotation, the left-handed Murphy will continue to see time at the plate and in the outfield.

"Brett has as much power as anybody on the team," Savage said. "He was selected by the Atlanta Braves in the draft and he's going to have a tremendous future here at UCLA. Murphy, also, will still be used as a position player. We think his future is on the mound, but he certainly can benefit us in the outfield as well."

## SCHEDULE

The Bruins faced the second-most challenging schedule in the nation last season and played the toughest slate of games in 2006, as rated by Boyd's World. And 2008 should be no different. Playing non-conference weekend series' against Oklahoma, Long Beach State, UC Riverside, Cal Poly and St. Mary's, the Bruins will be battle-tested at the start of Pac-10 play.

UCLA's midweek schedule does not lighten up, as the Bruins will play three games against Cal State Fullerton and two games each versus UC Irvine, Pepperdine and San Diego State. Other non-conference matchups include Tuesday night contests against San Diego, UC Santa Barbara and UNLV. In the second weekend of the season, the Bruins will compete in the inaugural Urban Invitational against Bethune-Cookman, Southern and USC.

"Our schedule is a lot more West Coast this year, but we are going to be challenged as much as ever, in terms of the quality of our opponents," Savage said. "Being in the Pac-10 Conference and being in Los Angeles, you've got great non-league opponents within a 50-mile radius. It's standard living in southern California. We have the benefit of playing an outstanding midweek schedule in addition to a strong weekend schedule."

And throw in 24 Pac-10 games, and UCLA's schedule will again rank among the most challenging in the nation. The Bruins open Pac-10 play at Arizona (March 28-30), playing a Wildcat squad ranked No. 1 in Collegiate Baseball's preseason top-40 poll. The Bruins host USC (April 4-6) in the annual Lexus Gauntlet Challenge and welcome Stanford to town two weeks later (April 18-20). UCLA returns to Washington the following weekend (April 25-27) and will host Arizona State, a College World Series participant one year ago (May 2-4).

The Bruins' Pac-10 slate continues at two-time defending national champion Oregon State (May 9-11), before the final home series of the spring, versus Washington State (May 16-18). UCLA closes its 56-game regular season at California (May 23-25).

"We have a very challenging schedule both in conference and out of the conference," Savage said. "We don't want to get ahead of ourselves with the rankings and so forth. We really want to get into the process of having fun with this – of challenging ourselves, of being competitive, and of looking at the present instead of looking into the future. We're looking forward to opening against Oklahoma, and after that the games start coming quickly."



JASON NOVAK

TIM MURPHY

GAVIN BROOKS

BRENDAN LAFFERTY

## Pac-10 Baseball - The Conference of Champions

The Pacific-10 Conference truly is the "Conference of Champions," as it owns 26 baseball national championships since 1947, more than any other conference. The Pac-10 also claims 65 first-team All-Americans over the past 26 seasons (Baseball America), eight national coaches of the year (Baseball America and The Sporting News) and 14 national players of the year (Baseball America, Baseball Coaches' Association and The Sporting News).

The powerful and prestigious Pac-10 Conference has historically dominated college baseball. There has been a Pac-10 representative in all but four (1996, 1991, 1989, 1962) College World Series fields since the championship began in 1947. In 34 of those championships, a Pac-10 team has finished either first or second. The Pac-10 has also placed 172 players on the All-College World Series teams over the 40 season in which it has had a participant, including 20 MVPs, more than any other conference.

In recent years, Pac-10 Conference baseball has continued to enjoy much success on the national level. In 1993 and 1994, Arizona State made back-to-back trips to the College World Series, the only Pac-10 team to do so in the '90s. Five Southern Division squads ventured to NCAA Regionals, with Stanford and UCLA advancing to the College World Series in 1996 and 1997, respectively. In 1998, four schools made it to the NCAA Regionals, while USC and Arizona State advanced to the College World Series.

In 2003, Stanford made its fifth consecutive trip to the College World Series and finished second. The following season, Arizona went to the College World Series for the first time since 1986. Arizona State and Oregon State both advanced to Omaha in 2005. Each of the past two seasons, Oregon State won the NCAA Championship.



### OVER THE YEARS

- 2009 Oregon reinstates its baseball program in July 2007 and will resume play in 2009
- 1999 Pac-10 dissolves the North and South Divisions in favor of one group; Portland State is dropped from the Pac-10
- 1996 Gonzaga and Portland are dropped from the Northern Division
- 1991 Eastern Washington is dropped from the Northern Division
- 1982 Portland State, Gonzaga and Eastern Washington are added to the North; Oregon drops baseball
- 1979 Arizona and Arizona State are added to the Southern Division, formally establishing the Pac-10
- 1977 The Pac-8 Conference returns to two four-team divisions (North, South)
- 1976 The Southern Division becomes the CIBA and adds UC Santa Barbara for one season
- 1970 The Pac-8 Conference splits into two four-team divisions (North, South)
- 1967 The Pac-8 Conference emerges as one eight-team group (UCLA, USC, STAN, CAL, OSU, ORE, WASH, WSU)
- 1951 Two five-team divisions form (CIBA, North); CIBA includes UCLA, USC, STAN, CAL, SCU; Northern Division includes WSU, OSU, ORE, WASH, IDAHO
- 1947 CIBA adds St. Mary's for the next four seasons
- 1935 UCLA and Santa Clara are added back to the CIBA
- 1933 UCLA, Santa Clara and San Francisco are dropped from the CIBA
- 1931 San Francisco added to CIBA
- 1928 UCLA added to CIBA
- 1927 CIBA forms, consisting of St. Mary's, USC, Stanford, California and Santa Clara
- 1925 Northern Division includes WASH, WSU, ORE, OSU, IDAHO and carries Montana through 1928

### National Titles (by Conference)

Pacific-10	26
Big 12	10
Big Ten	6
SEC	5
Big East	4
Big West	4
West Coast	1
Patriot	1
Missouri Valley	1
ACC	1
WAC	1

### Pac-10 Standings (1997-2007)

Pac-10	W	L	PCT
Stanford	135	81	.625
Arizona State	135	81	.625
USC	123	93	.569
Arizona	111	105	.514
Washington	105	111	.486
UCLA	103	111	.479
Oregon State	99	116	.460
California	100	116	.463
Washington State	59	158	.272

### Overall Standings (1997-2007)

Pac-10	W	L	PCT
Stanford	390	178	.687
Arizona State	380	170	.691
Oregon State	310	205	.602
Arizona	302	216	.583
Washington	300	215	.583
USC	307	233	.569
Washington State	203	193	.513
UCLA	274	262	.511
California	257	246	.511

### Conference Champion Year-by-Year

Pac-10	North	South	1974	ORE/WSU	USC**	1938	OSU/WSU	CAL
2007	ASU		1973	WSU	USC**	1937	ORE	CAL
2006	OSU		1972	WSU/ORE	USC**	1936	WSU	USC
2005	OSU		1971	WSU	USC**	1935	ORE	CAL/USC
2004	STAN		1970	WSU	USC**	1934	ORE	CAL
2003	STAN		1969	UCLA		1933	WSU	CAL
2002	USC		1968	USC		1932	WASH	USC
2001	USC		1967	STAN		1931	WASH	STAN
2000	ASU/STAN/UCLA		1966	WSU	USC	1930	WASH	USC
1999	STAN		1965	WSU	STAN	1929	WASH	CAL
1998	WASH*	STAN	1964	ORE	USC	1928	ORE/WSU	STM
1997	WASH*	STAN	1963	OSU	USC	1927	WSU	STM
1996	WASH	USC*	1962	OSU	SC			
1995	WSU	USC*	1961	WSU	USC			
1994	OSU	STAN	1960	WSU	CAL/USC	1926	WASH	CAL
1993	WASH	ASU	1959	WASH	USC***	1925	WASH	STAN
1992	WASH	ARIZ	1958	OSU	USC***	1924	CAL	
1991	WSU	USC	1957	ORE	CAL***/USC	1923	WASH	CAL
1990	WSU	STAN	1956	WSU***	USC	1922	WASH	
1989	WSU	ARIZ	1955	ORE	USC***	1921	CAL	
1988	WSU	ASU	1954	ORE***	USC	1920	CAL	
1987	WSU	STAN	1953	ORE	STAN***	1919	WASH	
1986	OSU	UCLA	1952	OSU***	USC	1918	ORE	
1985	WSU	STAN	1951	OSU	USC***	1917	CAL	
1984	WSU/PSU	ASU	1950	WSU***	STAN	1916	CAL	
1983	OSU	STAN	1949	WSU	USC***			
1982	OSU/WSU	ASU	1948	WSU	USC***			
1981	WASH	ASU	1947	WSU	CAL/USC			
1980	WSU	ARIZ/CAL	1946	ORE	USC			
1979	WSU	UCLA	1945	WSU	CAL			
1978	WSU	USC**	1944	WSU	UCLA			
1977	WSU	USC**	1943	ORE	+CAL/USC			
			1942	ORE	USC			
	<b>North</b>	<b>CIBA</b>	1941	ORE	CAL/STM			
1976	WSU**	UCLA	1940	OSU	STM			
1975	WSU	USC**	1939	ORE	USC/STM			

\* denotes North-South playoff champion  
 \*\* denotes Pac-8 playoff champion  
 \*\*\* denotes Pacific Coast Conference playoff champion  
 + California won the CIBA Division 1 and USC won Division 2. Cal defeated USC in a playoff for the CIBA title.

**LEGEND**  
 ORE (Oregon)  
 PSU (Portland State)  
 SC (Santa Clara)  
 STM (St. Mary's)



## NUMERICAL ROSTER

No.	Name	Pos.	Yr.	B/T	Ht.	Wt.	Hometown (Previous School)
1	Jermaine Curtis	INF	Jr.	R/R	6-1	190	Fontana, Calif. (AB Miller HS)
3	Brandon Crawford	INF	Jr.	L/R	6-2	200	Pleasanton, Calif. (Foothill HS)
4	Brent Dean	C	Sr.	R/R	6-1	210	Torrance, Calif. (L.A. Harbor CC)
5	Brady Dolan	OF	RS Sr.	R/R	6-1	195	Reno, Nev. (Sierra CC)
6	Cody Decker	INF	Jr.	R/R	6-0	225	Santa Monica, Calif. (Santa Monica HS)
7	Gavin Brooks	LHP	So.	L/L	6-3	210	Vista, Calif. (Rancho Buena Vista HS)
8	Matt Drummond	LHP	So.	L/L	6-1	180	Paso Robles, Calif. (Paso Robles HS)
9	Blair Dunlap	OF	RS So.	R/R	6-0	190	Mission Viejo, Calif. (Santa Margarita HS)
11	Alden Carrithers	INF	Sr.	L/R	5-10	165	Portland, Ore. (UC Santa Barbara)
12	Ryan Babineau	C	Jr.	R/R	6-2	210	Rancho Cucamonga, Calif. (Etiwanda HS)
14	Casey Haerther	INF	So.	R/R	6-2	210	Chatsworth, Calif. (Chaminade HS)
15	Justin Uribe	OF/LHP	So.	L/L	5-11	180	Santa Ana, Calif. (Foothill HS)
16	Brett Krill	OF	Fr.	R/R	6-4	210	Laguna Niguel, Calif. (Aliso Niguel HS)
18	Mickey Weisser	OF	Sr.	L/L	5-11	205	Citrus Heights, Calif. (Sierra CC)
19	Eddie Murray	INF	Jr.	R/R	5-8	160	Artesia, Calif. (Gahr HS)
20	Raul Duran	OF	RS Fr.	R/R	6-3	210	Santa Ana, Calif. (Saddleback HS)
21	Tim Schlatter	RHP	Jr.	R/R	6-1	185	Lafayette, Calif. (Sacramento CC)
23	Dan Klein	RHP	Fr.	R/R	6-3	190	Los Alamitos, Calif. (Servite HS)
24	Tim Murphy	OF/LHP	Jr.	L/L	6-2	205	Vista, Calif. (Rancho Buena Vista HS)
25	Charles Brewer	RHP	So.	R/R	6-5	195	Paradise Valley, Ariz. (Chapparral HS)
26	J.D. Haver	RHP	So.	R/R	6-5	200	Long Beach, Calif. (Wilson HS)
27	Rob Rasmussen	LHP	Fr.	L/L	5-11	160	Arcadia, Calif. (Pasadena Poly)
28	Marc Navarro	OF	Fr.	L/R	5-11	180	Laguna Niguel, Calif. (Santa Margarita HS)
29	Jeff Rapoport	OF	RS Fr.	R/R	6-0	180	Westlake Village, Calif. (Westlake HS)
32	Matt Grace	LHP	Fr.	L/L	6-4	205	Palos Verdes Estates, Calif. (Palos Verdes HS)
33	Erik Goeddel	RHP	Fr.	R/R	6-2	180	Hillsborough, Calif. (Bellarmine Prep HS)
34	Brendan Lafferty	LHP	RS Jr.	L/L	6-4	200	Riverside, Calif. (Riverside Poly HS)
35	Mitchell Beacom	LHP	Fr.	L/L	6-8	230	San Diego, Calif. (University City HS)
36	Dustin Quist	OF	RS So.	R/R	6-2	220	Fresno, Calif. (Central HS)
38	Garett Claypool	RHP	So.	R/R	6-2	175	West Hills, Calif. (El Camino Real HS)
40	Jason Novak	RHP	Jr.	R/R	6-2	205	Agoura, Calif. (Agoura HS)
41	Brandon Lodge	INF	Fr.	R/R	6-2	170	Coto de Caza, Calif. (Tesoro HS)
43	Niko Gallego	INF	Fr.	R/R	5-10	160	Yorba Linda, Calif. (Esperanza HS)
44	Gabe Cohen	OF	So.	R/R	6-2	205	Woodland Hills, Calif. (El Camino Real HS)
49	Chris Giovinazzo	C	Fr.	R/R	6-1	190	Laguna Hills, Calif. (Laguna Hills HS)
50	Gino Aielli	C/OF	Jr.	R/R	5-10	195	Laguna Niguel, Calif. (Saddleback JC)

## ALPHABETICAL ROSTER

No.	Name	Position
50	Gino Aielli	C/OF
12	Ryan Babineau	C
35	Mitchell Beacom	LHP
25	Charles Brewer	RHP
7	Gavin Brooks	LHP
11	Alden Carrithers	INF
38	Garett Claypool	RHP
44	Gabe Cohen	OF
3	Brandon Crawford	INF
1	Jermaine Curtis	INF
4	Brent Dean	C
6	Cody Decker	INF
5	Brady Dolan	OF
8	Matt Drummond	LHP
9	Blair Dunlap	OF
20	Raul Duran	OF
43	Niko Gallego	INF
49	Chris Giovinazzo	C
33	Erik Goeddel	RHP
32	Matt Grace	LHP
14	Casey Haerther	INF
26	J.D. Haver	RHP
23	Dan Klein	RHP
16	Brett Krill	OF
34	Brendan Lafferty	LHP
41	Brandon Lodge	INF
24	Tim Murphy	LHP/OF
19	Eddie Murray	INF
28	Marc Navarro	OF
40	Jason Novak	RHP
36	Dustin Quist	OF
29	Jeff Rapoport	OF
27	Rob Rasmussen	LHP
21	Tim Schlatter	RHP
15	Justin Uribe	OF/LHP
18	Mickey Weisser	OF

### Coaching Staff

22	John Savage	Head Coach (4th season)
2	Brian Green	Assistant Coach (4th season)
31	Matt Jones	Assistant Coach (4th season)
17	P.C. Shaw	Assistant Coach (2nd season)

### Support Staff

Steve Agee	staff athletic trainer
Karl Jordan	strength and conditioning
Jim Skelton	sports psychologist
Amanda Smith	student athletic trainer
Nadya Seal	student athletic trainer
Trevor Ryan	student manager
Ozzie Nunez	student manager
Matt Passinisi	student manager
Juan Mendoza	student manager
Ryan Menezes	video coordinator
Aaron Giacosa	academic advisor
Chris Romo	field manager
Dave Martinez	game management
Alex Timiraos	sports information director
Christi Phillips	marketing
Tom Snyder	public address announcer

### Pronunciation Guide

#### PLAYERS

Gino Aielli	JEE-noh ai-ELL-ee
Babineau	BAH-bin-oh
Alden Carrithers	ALL-den ker-RITH-ers
Gallego	guy-YAY-goh
Goeddel	guh-DELL
Haerther	HAR-ther (rhymes with farther)
Haver	HAY-ver
Schlatter	sh-LAY-ter
Uribe	yur-EE-bay
Weisser	WY-zer

#### CITIES

Cucamonga	coo-cuh-MUNG-uh
Niguel	nig-ELL
Torrance	TORR-ense



# RADIO / TELEVISION ROSTER



**1** **Jermaine Curtis**  
6-1, 190 - INFILDER - JR.  
FONTANA, CALIF.



**3** **Brandon Crawford**  
6-2, 200 - INFILDER - JR.  
PLEASANTON, CALIF.



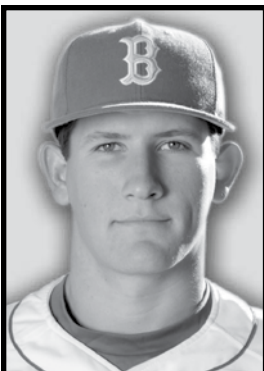
**4** **Brent Dean**  
6-1, 210 - CATCHER - SR.  
TORRANCE, CALIF.



**5** **Brady Dolan**  
6-1, 195 - OUTFILDER - R. SR.  
RENO, NEV.



**6** **Cody Decker**  
6-0, 225 - INFILDER - JR.  
SANTA MONICA, CALIF.



**7** **Gavin Brooks**  
6-3, 210 - LHP - SO.  
VISTA, CALIF.



**8** **Matt Drummond**  
6-1, 180 - LHP - SO.  
PASO ROBLES, CALIF.



**9** **Blair Dunlap**  
6-0, 190 - OUTFILDER - R. SO.  
MISSION VIEJO, CALIF.



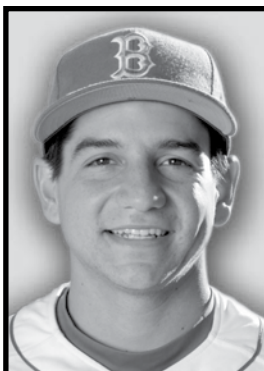
**11** **Alden Carrithers**  
5-10, 165 - INFILDER - SR.  
PORTLAND, ORE.



**12** **Ryan Babineau**  
6-2, 210 - CATCHER - JR.  
RANCHO CUCAMONGA, CALIF.



**14** **Casey Haerther**  
6-2, 210 - INFILDER - SO.  
CHATSWORTH, CALIF.



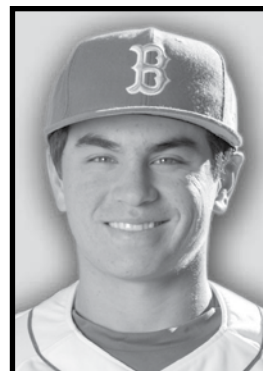
**15** **Justin Uribe**  
5-11, 180 - OF/LHP - SO.  
SANTA ANA, CALIF.



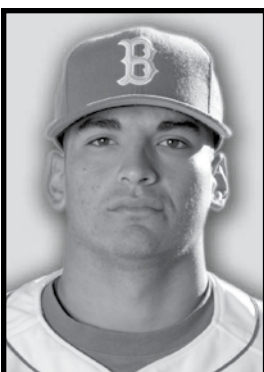
**16** **Brett Krill**  
6-4, 210 - OUTFILDER - FR.  
LAGUNA NIGUEL, CALIF.



**18** **Mickey Weisser**  
5-11, 205 - OUTFILDER - SR.  
CITRUS HEIGHTS, CALIF.



**19** **Eddie Murray**  
5-8, 160 - INFILDER - JR.  
ARTESIA, CALIF.



**20** **Raul Duran**  
6-3, 210 - OUTFILDER - R. FR.  
SANTA ANA, CALIF.



**21** **Tim Schlatter**  
6-1, 185 - RHP - JR.  
LAFAYETTE, CALIF.



**23** **Dan Klein**  
6-3, 190 - RHP - FR.  
LOS ALAMITOS, CALIF.



**24** **Tim Murphy**  
6-2, 205 - LHP/OF - JR.  
VISTA, CALIF.



**25** **Charles Brewer**  
6-5, 195 - RHP - SO.  
PARADISE VALLEY, ARIZ.

# RADIO / TELEVISION ROSTER



**26** **J.D. Haver**  
6-5, 200 - RHP - SO.  
LONG BEACH, CALIF.



**27** **Rob Rasmussen**  
5-11, 160 - LHP - FR.  
ARCADIA, CALIF.



**28** **Marc Navarro**  
5-11, 180 - OUTFIELDER - FR.  
LAGUNA NIGUEL, CALIF.



**29** **Jeff Rapoport**  
6-0, 180 - OUTFIELDER - R. FR.  
WESTLAKE VILLAGE, CALIF.



**32** **Matt Grace**  
6-4, 205 - LHP - FR.  
PALOS VERDES ESTATES, CALIF.



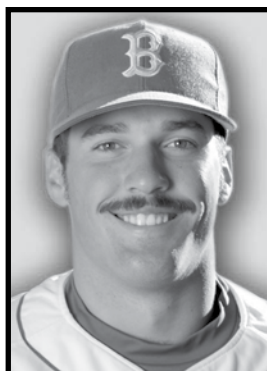
**33** **Erik Goeddel**  
6-2, 180 - RHP - FR.  
HILLSBOROUGH, CALIF.



**34** **Brendan Lafferty**  
6-4, 200 - LHP - R. JR.  
RIVERSIDE, CALIF.



**35** **Mitchell Beacom**  
6-8, 230 - LHP - FR.  
SAN DIEGO, CALIF.



**36** **Dustin Quist**  
6-2, 220 - OUTFIELDER - R. SO.  
FRESNO, CALIF.



**38** **Garrett Claypool**  
6-2, 175 - RHP - SO.  
WEST HILLS, CALIF.



**40** **Jason Novak**  
6-2, 205 - RHP - JR.  
AGOURA, CALIF.



**41** **Brandon Lodge**  
6-2, 170 - INFILDER - FR.  
COTO DE CAZA, CALIF.



**43** **Niko Gallego**  
5-10, 160 - INFILDER - FR.  
YORBA LINDA, CALIF.



**44** **Gabe Cohen**  
6-2, 205 - OUTFIELDER - SO.  
WOODLAND HILLS, CALIF.



**49** **Chris Giovinazzo**  
6-1, 190 - CATCHER - FR.  
LAGUNA HILLS, CALIF.



**50** **Gino Aielli**  
5-10, 195 - C/OF - JR.  
LAGUNA NIGUEL, CALIF.



**22** **John Savage**  
HEAD COACH  
4TH SEASON



**2** **Brian Green**  
ASSISTANT COACH  
4TH SEASON



**31** **Matt Jones**  
ASSISTANT COACH  
4TH SEASON



**17** **P.C. Shaw**  
ASSISTANT COACH  
2ND SEASON

**PLAY WITH IT. OR AGAINST IT.**



***EASTON***®